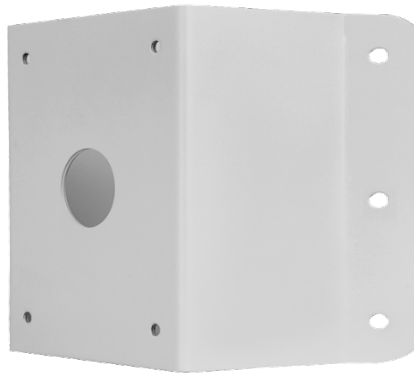


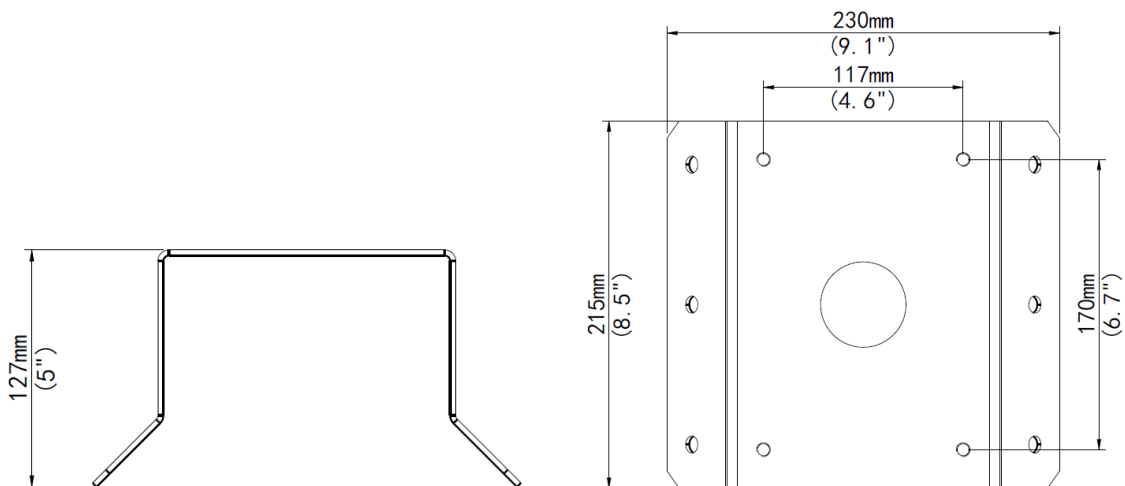
# TR-UC08-B-IN PTZ Dome Corner Mount



## Specifications

Bracket	TR-UC08-B-IN
Application	Indoor or outdoor, PTZ Dome Corner installation
Dimensions(L x W x H)	215mmx230mmx127mm(8.5" x 9.1"x 5")
Weight	0.73kg(1.6lb)
Material	Aluminum alloy

## Dimensions



**Zhejiang Uniview Technologies Co.,Ltd.**

©2015 Zhejiang Uniview Technologies Co.,Ltd. All rights reserved.

\*Product specifications and availability are subject to change without notice.