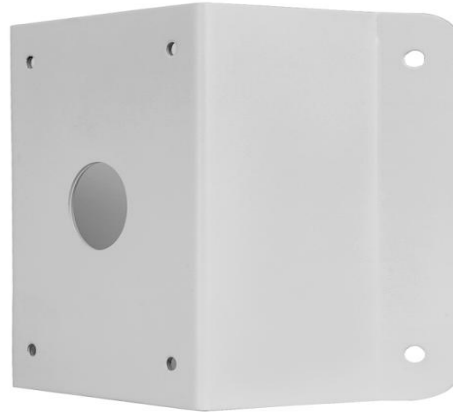


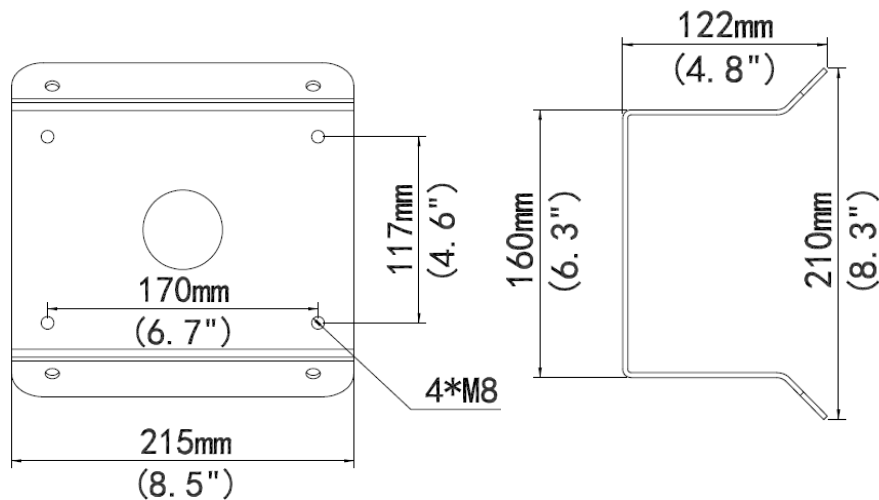
# TR-UC08-A-IN PTZ Dome Corner Mount



## Specifications

Bracket	TR-UC08-A-IN
Application	Indoor or outdoor, PTZ Dome Corner installation
Dimensions(L × W × H)	215mmx210mmx122mm(8.5" x 8.3"x 4.8")
Weight	1.87kg(4.1lb)
Material	steel

## Dimensions



**Zhejiang Uniview Technologies Co.,Ltd.**

©2015-2018 Zhejiang Uniview Technologies Co.,Ltd. All rights reserved.

\*Product specifications and availability are subject to change without notice.