

COREFIX[®] SPIKE

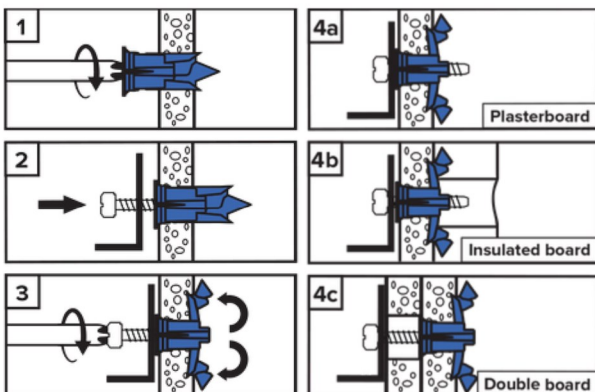
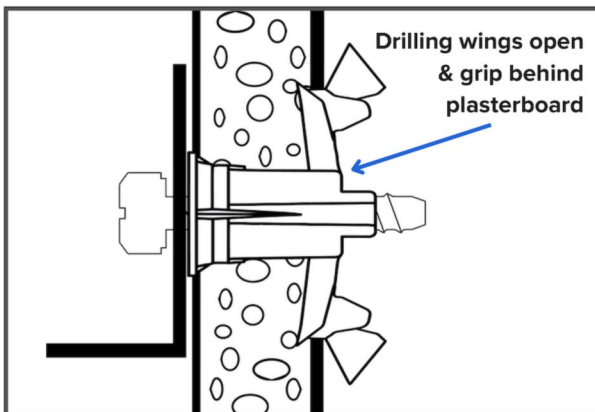
FEATURES

- Heavy duty self-drilling plasterboard fixing, requires only a screwdriver to install
- Drilling wings pierce plasterboard and open to grip behind it for a secure hold
- Ideal for plasterboard including stud walls & cavity walls
- Die cast metal fixing with engineered nylon

APPLICATIONS

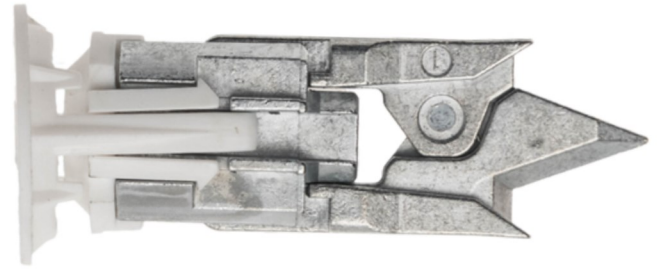
- TV brackets
- Bathroom fixtures
- Curtains
- Cabinets
- Heavy mirrors
- Shelves

INSTRUCTIONS

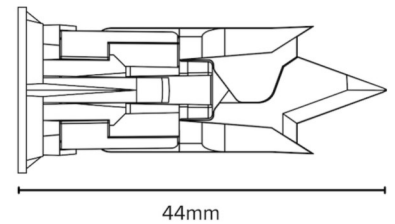


- Always check for cables and pipes before drilling and use suitable PPE.
- Always refer to manufacturer's instructions when installing anything with Corefix and use the recommended number of fixings.
- Not recommended for cantilever brackets.
- Insulated board may require undercutting tool.

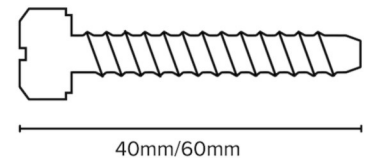
UK Patent Application Number GB2403653.5.



Ø20mm



M5



TECHNICAL DATA

	40mm bolt	60mm bolt
Drill diameter	n/a	n/a
Min. hole drill depth	n/a	n/a
Screw diameter	5mm	5mm
Screw material	Steel	Steel
Fixing length	44mm	44mm
Fixing material	Die cast metal/ engineered nylon	Die cast metal/ engineered nylon
Max. fixture thickness	10mm	30mm
Safe Working Load (Shear, single fixing)	50kg	50kg

Notes: Factor of safety of 2. Data is for static loadings.