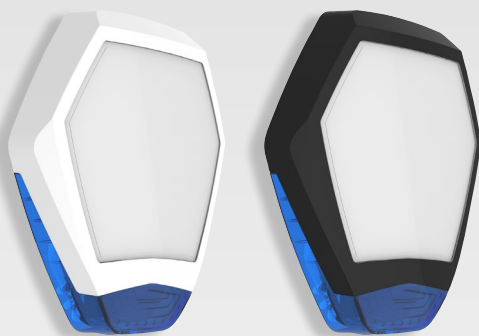


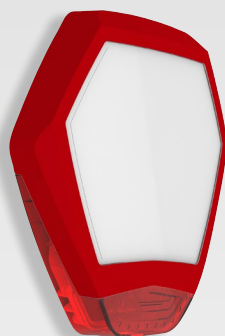
Odyssey X3 white/black frames:



Lens colour options:



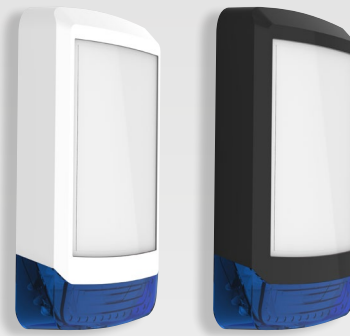
Odyssey X3 red frame:



Lens colour options:



Odyssey X1 white/black frames:



Lens colour options:



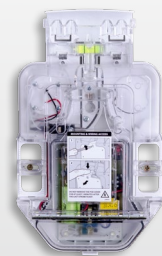
Backlit



Odyssey X-B

Grade 3 Sounder with Integral Backlight

- 115dB (A) twin piezo sounder
- Wall & cover tamper
- Patented engineer hold-off mode
- Battery monitoring with fault output
- Alternating white LED indication
- EN50131-4 Grade 3 Class IV

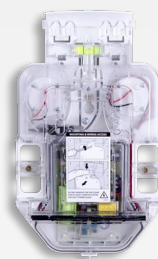


Odyssey X-BE

Grade 2 Sounder with Integral Backlight

- 109dB (A) piezo sounder
- Wall & cover tamper
- Patented engineer hold-off mode
- Alternating white LED indication
- EN50131-4 Grade 2 Class IV

Conventional



Odyssey X

Grade 3 Sounder

- 115dB (A) twin piezo sounder
- Wall & cover tamper
- Patented engineer hold-off mode
- Battery monitoring with fault output
- Alternating white LED indication
- EN50131-4 Grade 3 Class IV



Odyssey X-E

Grade 2 Sounder

- 109dB (A) piezo sounder
- Wall & cover tamper
- Patented engineer hold-off mode
- Alternating white LED indication
- EN50131-4 Grade 2 Class IV

Dummy



Odyssey X-BD

Backlit Dummy Deterrent

- Imitation sounder - Mimics Odyssey X wired and wireless sounders
- Low cost deterrent
- 12 V wired input for backlight & comfort LEDs
- 2 x AA Batteries for comfort LEDs only
- 3-5 Year battery life
- Accepts X1 and X3 covers

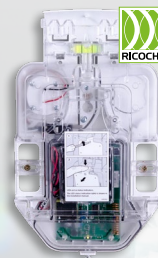


Odyssey X-D

Dummy Sounder

- No electronics included
- Imitation sounder
- Low cost deterrent
- Accepts X1 and X3 covers

Wireless



Odyssey X-W

Wireless Sounder

- 105dB (A) piezo sounder
- Wall & cover tamper
- Selectable comfort LEDs
- Ricochet® mesh technology
- 8 x AA lithium batteries included
- EN50131-4, EN50131-5-3 Grade 2 Class IV

ODYSSEY X SERIES PART NUMBERS

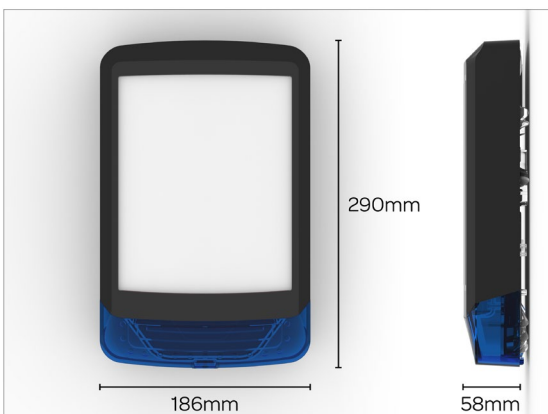
ODYSSEY X COVERS

WDA-0001	Odyssey X1 Cover (White/Blue)
WDA-0002	Odyssey X1 Cover (White/Red)
WDA-0003	Odyssey X1 Cover (White/White)
WDA-0007	Odyssey X1 Cover (White/Green)
WDA-0004	Odyssey X1 Cover (Black/Blue)
WDA-0005	Odyssey X1 Cover (Black/Red)
WDA-0006	Odyssey X1 Cover (Black/White)
WDA-0008	Odyssey X1 Cover (Black/Green)
WDB-0001	Odyssey X3 Cover (White/Blue)
WDB-0002	Odyssey X3 Cover (White/Red)
WDB-0003	Odyssey X3 Cover (White/White)
WDB-0008	Odyssey X3 Cover (White/Green)
WDB-0004	Odyssey X3 Cover (Black/Blue)
WDB-0005	Odyssey X3 Cover (Black/Red)
WDB-0006	Odyssey X3 Cover (Black/White)
WDB-0007	Odyssey X3 Cover (Black/Green)
WDB-0012	Odyssey X3 Cover (Red/Red)
WDB-0013	Odyssey X3 Cover (Red/White)

ODYSSEY X BACKPLATE OPTIONS

WDC-0001	Odyssey X-BE
WDC-0002	Odyssey X-B
WDD-0001	Odyssey X-E
WDD-0002	Odyssey X
WDE-0001	Odyssey X-D
WDL-0001	Odyssey X-BD
GBV-0001	Odyssey X-W

ODYSSEY X1 DIMENSIONS



TECHNICAL SPECIFICATIONS

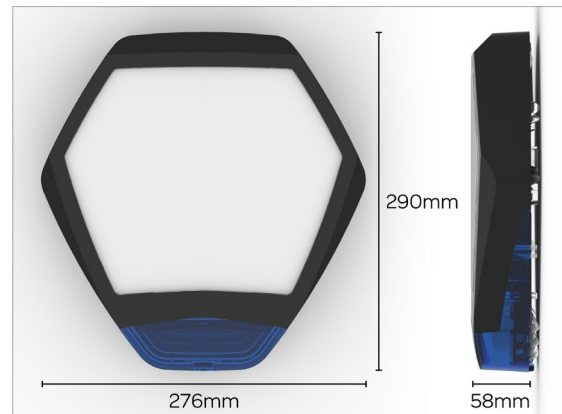
WIRED UNITS

Supply Voltage:	12-16 VDC (13.7 nominal)		
Current Drain (typical at 13.7VDC):			
Quiescent:	18mA + 40mA (Backlit version)		
Strobe:	100mA		
Sounder	SAB	LC	SCB
X-E:	285mA	160mA	30mA
X-BE:	325mA	200mA	70mA
X:	405mA	190mA	30mA
X-B:	445mA	230mA	70mA
Standby Battery :			
Type:	NiMh Stack		
Voltage:	7.2VDC (nominal)		
Capacity:	250mAh		
Flash Tube:	1Ws Xenon		
Comfort LEDs:			
Brightness:	100mcd (typical)		
Flash Rate (tamper secure):	1Hz alternating (typical)		

ENVIRONMENTAL

Volume (SAB mode at 13.7 VDC):	
X-W:	105dB(A)
X-E & X-EB:	109dB(A)
X & X-B:	115dB(A)
Acoustic Output:	Varying Sound Output
Cut-Off Time:	15 minutes
Waterproof Coating:	Conformal
Operating Temperature:	-25°C to +55°C (X-BD: -20°C to +55°C)
Storage Temperature:	-25°C to +60°C (X-BD: -20°C to +60°C)

ODYSSEY X3 DIMENSIONS



Custom Graphic Inserts

Available via the Texecom website, these photo quality custom designed graphic inserts replace traditional screen printing, enhancing quality and removing the need for installers and distributors alike to stock expensive custom screen printed covers.